

**MOSO®**

# Bamboo Flooring

*Sustainable, beautiful,  
hard and durable  
flooring*





Bamboo:  
the fastest growing  
plant in the world

# From bamboo plant to product

## Stem to strip

After harvesting, the Moso bamboo stems are split and the outer and inner skins are removed. The untreated strips have a yellowish colour (Natural) but can be lightly steamed, reducing the yellowish tone (Ecru) or more intensely steamed for a warm brown colour (Caramel).

## Strip to floor

After treating and drying, the strips are ready to be joined in several ways to make the final product:



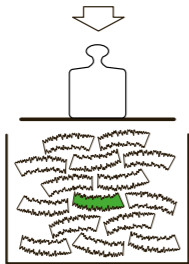
**Plain Pressed**  
Strips are placed horizontally and glued together to create a wide line pattern with the characteristic bamboo nodes clearly visible.



**Side Pressed**  
Strips are placed vertically and glued together to create a narrow line pattern with the bamboo nodes visible in a subtle way.



**High Density®**  
Strips are crushed, compressed and glued under high pressure, creating an elegant random grain pattern. The result is a floor that is even harder than the best tropical hardwood species.



**Extra hard**  
In this brochure High Density® and Forest is indicated by a hammer.



► [www.moso-bamboo.com/production](http://www.moso-bamboo.com/production)

More about MOSO® Bamboo Colours at  
► [www.moso-bamboo.com/colours](http://www.moso-bamboo.com/colours)



# MOSO® Bamboo Benefits

► [www.moso-bamboo.com/benefits](http://www.moso-bamboo.com/benefits)



## Stored Carbon

Due to the fast growth - and related high yields - Moso bamboo locks far more CO<sub>2</sub> in durable products compared to wood species.



## Healthy

As a product from nature, MOSO® Bamboo Flooring are anti-static and anti-allergic, and thus facilitate a healthy indoor environment.



## Hard & durable

With a hardness and density similar to the best hardwood floors, MOSO® Bamboo Flooring is suitable for use even in heavy duty applications.



## Warranted quality

MOSO® Bamboo Flooring are of the highest quality and comes with a product guarantee of up to 30 years.



## Endless resource

With a growing speed of up to 1 meter per day bamboo is the fastest growing plant on earth. Bamboo can be harvested without deforestation.



## High stability

Because the flooring is composed of multiple individual strips, MOSO® Bamboo Flooring will shrink and swell less than solid wood species, providing a more stable floor.



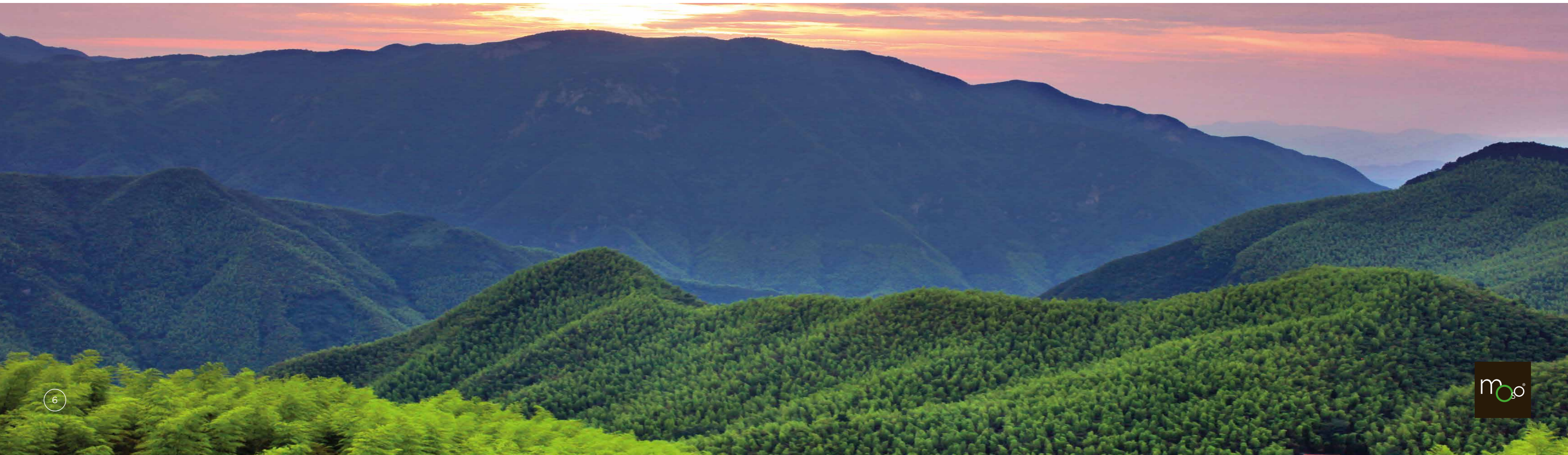
## Vast choice

MOSO® Bamboo Flooring are available in a large variety of configurations, styles and colours to cater to anyone's preferences.



## Natural beauty

Inspired by nature, MOSO® Bamboo Flooring is not only a responsible choice but also a stylish one.



# MOSO® Bamboo Flooring

MOSO® offers dozens of different bamboo flooring options which are divided into collections. This enables MOSO® to offer a bamboo flooring solution for everyone: long and wide boards in the **Grand Collection** for spacious, luxurious living areas; strong and robust floors to withstand tough conditions in the **Eternal Collection**; and easy to install, economically friendly floors in the **Dynamic Collection**. The **MOSO® Bamboo Outdoor** Collection offers ecological, stable and durable flooring for exterior applications.

## MOSO® Grand Collection

**Bamboo Elite**  
12



**Bamboo Elite Herringbone**  
14



**Bamboo Elite Premium**  
16



**Bamboo UltraDensity®**  
18



## MOSO® Eternal Collection

**Bamboo Supreme**  
22



**Bamboo Industriale**  
24



**Bamboo Forest**  
26



## MOSO® Dynamic Collection

**Purebamboo**  
30



**Topbamboo**  
32



## MOSO® Outdoor Collection

**Bamboo X-treme®**  
34



**Bamboo N-durance®**  
35



## MOSO® Floor-selector

**Sustainability**  
38





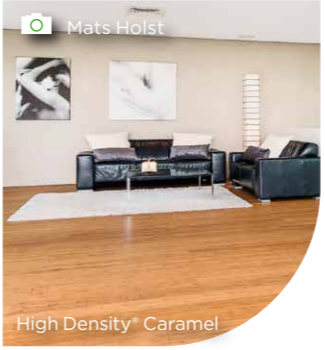
# MOSO®

## Grand Collection

The Grand Collection was especially developed for customers who appreciate the aesthetics of **large boards** for a **spacious** and **exclusive** look. Thanks to the generous dimensions of the boards, the installation can be done relatively fast. With Bamboo Elite Herringbone it is possible to install the boards in a beautiful pattern. The wide choice of colours and finishes in the Grand Collection offers a suitable bamboo flooring for any interior.

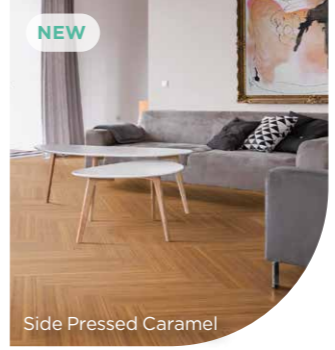
### Bamboo Elite

MOSO® Bamboo Elite is a 100% bamboo floor board which is relatively **long** and **wide**.



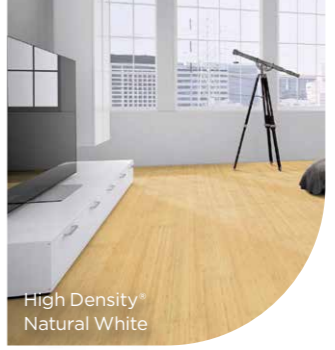
### Bamboo Elite Herringbone

MOSO® Bamboo Elite Herringbone boards enables you to install them in a beautiful **pattern**.



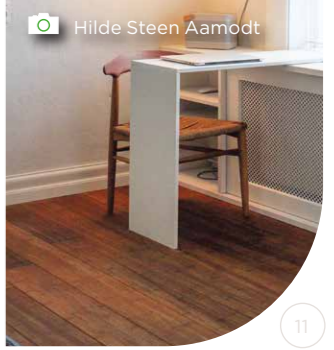
### Bamboo Elite Premium

MOSO® Bamboo Elite Premium is the most **stable** and **widest** bamboo floor board available.



### Bamboo UltraDensity®

MOSO® Bamboo UltraDensity® is extremely **hard** and **durable** and suitable for the **toughest conditions**.



Bamboo Elite High Density® Caramel



# MOSO® Bamboo Elite

## Long and wide boards - 100% bamboo

The MOSO® Bamboo Elite flooring consists of long and wide boards, with a large choice of bamboo patterns, colours and finishes. Bamboo Elite consists of three layers of solid bamboo strips. Pressing the middle layer crosswise optimises the stability.

MOSO® Bamboo Elite is suitable for anyone who wants original, solid bamboo flooring and certainly for those who wish for a spacious, stylish decor.

**Plain Pressed Ecu**  
lacquered (BF-LA326)



**Plain Pressed Caramel**  
unfinished (BF-LA350N) /  
lacquered (BF-LA351) /  
pre-oiled (BF-LA353)



**Side Pressed Ecu**  
lacquered (BF-LA346)



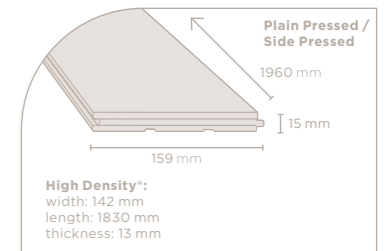
**Side Pressed Caramel**  
unfinished (BF-LA370N) /  
lacquered (BF-LA371) /  
pre-oiled (BF-LA373)



**High Density® Natural**  
lacquered (extra matt)  
(BF-DT301) /  
pre-oiled (BF-DT303)



**High Density® Caramel**  
lacquered (extra matt)  
(BF-DT351) /  
pre-oiled (BF-DT353)



# MOSO® Bamboo Elite Herringbone

MOSO® Grand Collection

► [www.moso-bamboo.com/elite-herringbone](http://www.moso-bamboo.com/elite-herringbone)

Timeless classic with a modern bamboo touch

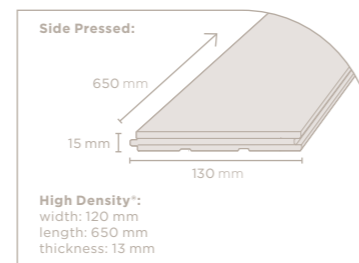
The MOSO® Bamboo Elite Herringbone floor boards are made of three layers of solid bamboo of which the middle layer is pressed in cross direction to maximise the stability. The boards are equipped with a tongue/groove connection and are placed alternating left and right on the board which enables you to install them in a beautiful herringbone pattern.



**Side Pressed Caramel**  
lacquered (extra matt)  
(BF-EL371-VG)  
pre-oiled Woca  
(BF-EL373-VG)



**High Density\* Caramel**  
lacquered (extra matt)  
(BF-EL250-VG)







## MOSO® Bamboo Elite Premium

### Longest and widest boards with click system

MOSO® Bamboo Elite Premium flooring boards are even longer and wider than Bamboo Elite and consist of three layers of solid bamboo. The boards are equipped with a click system for easy installation and, thanks to the high stability, can be installed on top of floorheating in a floating installation.

MOSO® Bamboo Elite Premium is perfect for anyone wanting a premium quality, solid bamboo floor that outperforms other flooring in stability and durability.

**Side Pressed Ecrú**  
lacquered (extra matt)  
(BF-EL346)



**Side Pressed Caramel**  
lacquered (extra matt)  
(BF-EL371) /  
pre-oiled (BF-EL373)



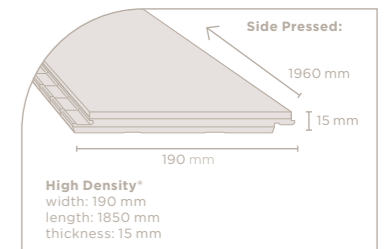
**Side Pressed Natural White**  
lacquered (extra matt)  
(BF-EL321-02)  
pre-oiled (BF-EL323-02)



**High Density® Caramel**  
lacquered (extra matt)  
(BF-EL250)



**High Density® Natural White**  
lacquered (extra matt)  
(BF-EL200-02)



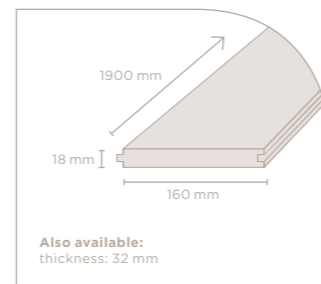
## The solution for heavy duty natural flooring

MOSO® Bamboo UltraDensity® is a solid bamboo flooring board made from compressed bamboo strips with an Ultra-High Density®. Thanks to its unique production method the material is extremely stable, hard and durable and therefore suitable for the toughest conditions: in very high traffic areas and even in semi-outdoor areas (protected from direct rain or sunshine).

The boards are supplied unfinished and have to be finished on site. The boards come with tongue and groove and a bevel on all 4 sides. Additionally Bamboo UltraDensity® is available as a stair panel.



**UltraDensity® Caramel**  
unfinished  
thickness: 18 mm (BF-DS2061) /  
thickness: 32 mm (BF-DSI060)





# MOSO®

## Eternal Collection

The Eternal Collection offers the **strongest** and most **robust** flooring in the MOSO® assortment. Especially for those looking for flooring that will last a **lifetime**, flooring from the Eternal Collection will be the best choice. These floors are so **strong** that they can be installed in the most demanding projects, such as **public buildings, offices** and **restaurants**, but are also suitable for residential applications.

### Bamboo Supreme

Thanks to its **stability**, MOSO® Bamboo Supreme is perfectly suited to **high traffic areas**.

### Bamboo Industriale

MOSO® Bamboo Industriale consists of short, **solid** bamboo strips that provide a ladder pattern for a **distinctive** look.

### Bamboo Forest

MOSO® Bamboo Forest is the most **authentic** bamboo floor imaginable.



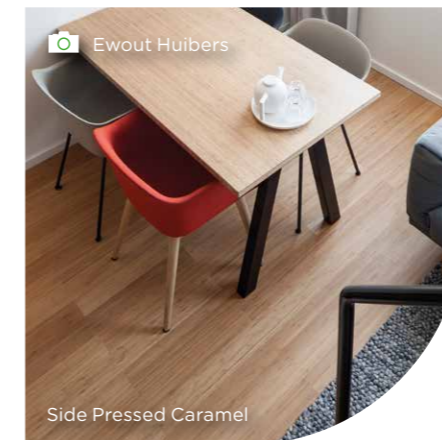
Pharos Office Building, The Netherlands

Sheryl Leysner

Peter Tjihuis

6649 kg CO<sub>2</sub>

Bamboo Industriale High Density® Caramel



Zoku Hotel Amsterdam  
The Netherlands



MOSO® Headoffice  
The Netherlands



Campus Hotel Hertenstein  
Switzerland



# MOSO® Bamboo Supreme

Perfect combination of durability and stability

MOSO® Bamboo Supreme offers a wide selection in bamboo patterns and colours. The boards are easy to handle and consist of two layers of bamboo: a 4 mm top layer on a sub layer made of cross pressed strips. The thick top layer ensures a long lifetime. With a total thickness of 10 mm the board is relatively thin compared to other wood flooring. This is an advantage in renovation projects, when the new flooring is installed on top of existing flooring. Thin material allows better heat-transfer than thicker boards and this makes Bamboo Supreme suitable for installation on underfloor heating.

MOSO® Bamboo Supreme is the right flooring when there are high requirements in durability, ecology and stability of the material.

**Plain Pressed Ecru**  
lacquered (BF-LA439) /  
pre-oiled (BF-LA433)



**Plain Pressed Caramel**  
lacquered (BF-LA459) /  
pre-oiled (BF-LA453)



**Side Pressed Ecru**  
lacquered (BF-LA449) /  
pre-oiled (BF-LA443)



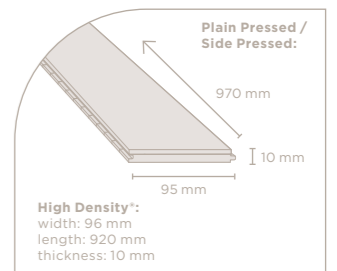
**Side Pressed Caramel**  
lacquered (BF-LA479) /  
pre-oiled (BF-LA473)



**High Density® Natural**  
lacquered (extra matt)  
(BF-DT409) /  
pre-oiled (BF-DT403)



**High Density® Caramel**  
lacquered (extra matt)  
(BF-DT459) /  
pre-oiled (BF-DT453)



# MOSO® Bamboo Industriale

## Striking industrial look and strength

MOSO® Bamboo Industriale consists of short, solid bamboo strips that provide a ladder pattern for a distinctive look. The bonded bamboo strips are glued onto the sub floor, sanded, filled and finished by the flooring installer. Because the bamboo flooring consists of small strips, it is very stable, making Bamboo Industriale perfectly suitable for installation on floor heating or in air-conditioned buildings.

MOSO® Bamboo Industriale is the right choice for those who have high requirements for the durability, ecology and stability of the material and want to see a unique pattern on the floor. Thanks to the thick toplayer this flooring lasts for many generations.



**Side Pressed Ecrú**  
unfinished  
(BF-PR400)



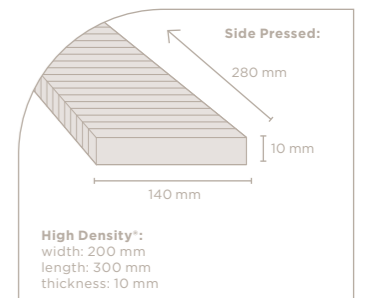
**Side Pressed Caramel**  
unfinished  
(BF-PR350)



**High Density\* Natural**  
unfinished  
(BF-PR1000)



**High Density\* Caramel**  
unfinished  
(BF-PR1050)



# MOSO® Bamboo Forest

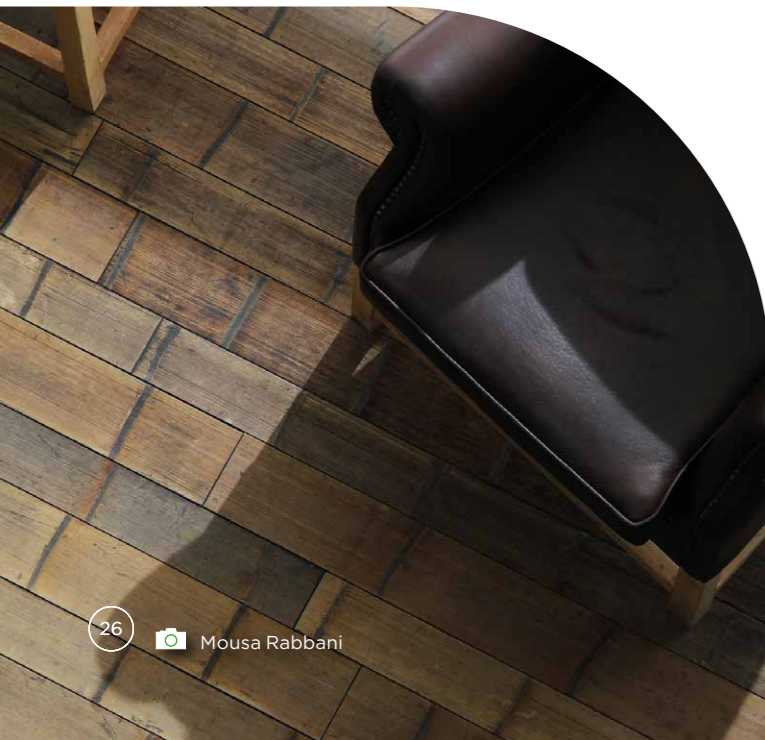
MOSO® Eternal Collection

► [www.moso-bamboo.com/forest](http://www.moso-bamboo.com/forest)

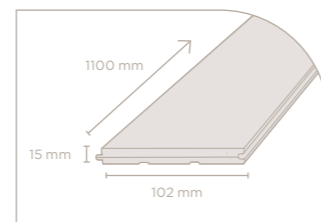
## Bringing the bamboo forest to your interior

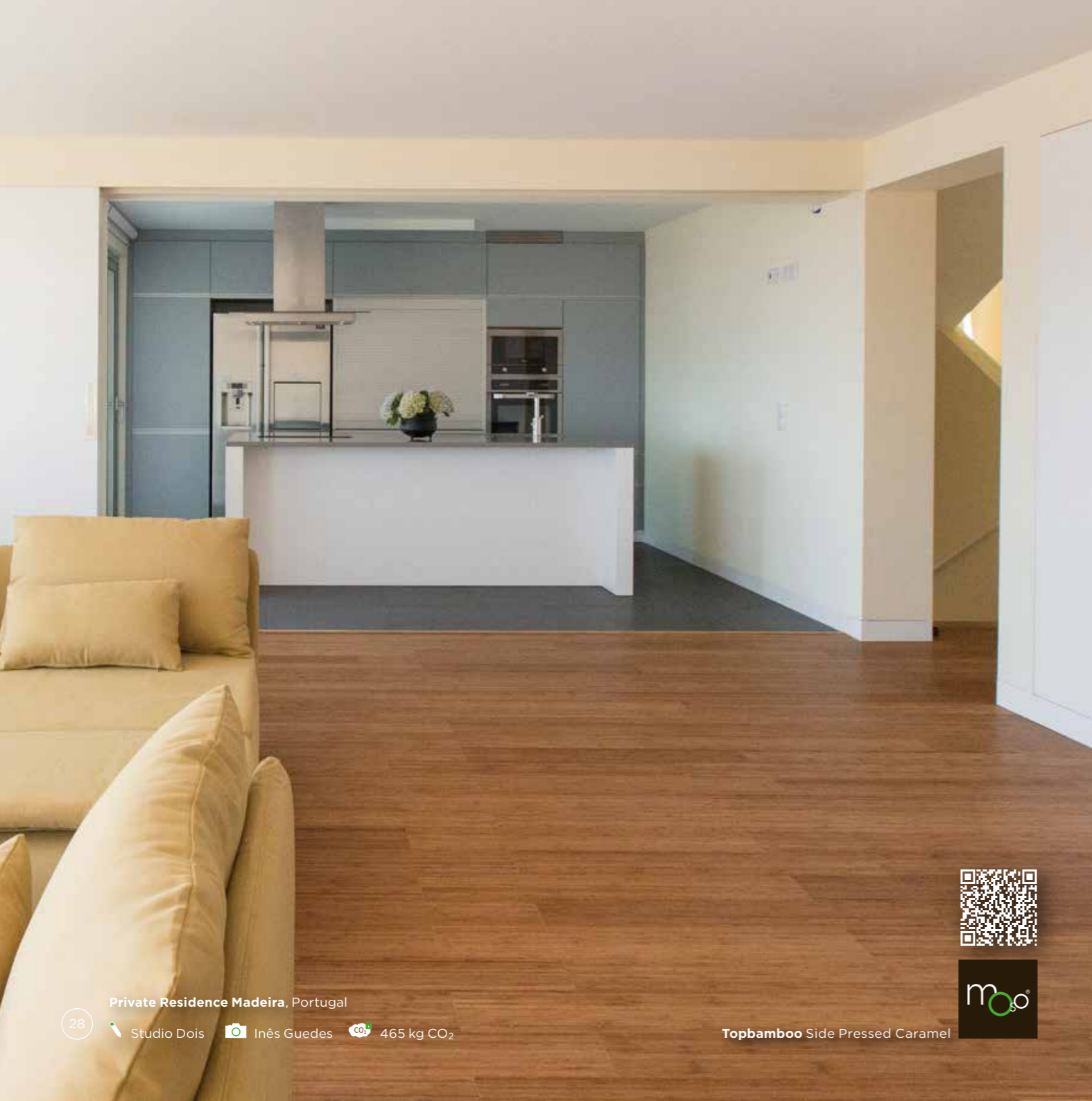
MOSO® Bamboo Forest is the most authentic bamboo flooring imaginable. The round bamboo stem is flattened by a special process and used as a top layer in a solid three-layer bamboo floorboard. The surface of this robust floor consists of the tough outer skin of the bamboo stem.

As a unique, eye-catching floor with the natural beauty and appearance of the bamboo stem, MOSO® Bamboo Forest fits in natural and modern interiors. The top layer is so hard and wear-resistant that an oil or lacquer finish is not required. The flooring is extremely durable.



Forest  
waxed  
(BF-FBS520)





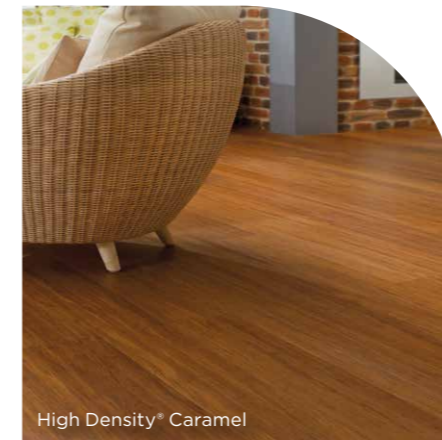
# MOSO®

## Dynamic Collection

The Dynamic Collection offers an **economical** choice for customers who want natural flooring that is **easy to install**. It does not mean that these floors are of a lesser quality or offer less choice. In fact, the Dynamic Collection provides the widest range of possibilities in colour, patterns, finishes, and dimensions, matching the latest trends.

### Purebamboo

MOSO® Purebamboo is **purely** made of bamboo. This original good **quality** product is **economically** interesting.



High Density® Caramel

### Topbamboo

MOSO® Topbamboo is the **easy to install** flooring with a top layer of bamboo and a click system.



High Density® Natural



Private Residence Madeira, Portugal

28

Studio Dois Inês Guedes 465 kg CO<sub>2</sub>

Topbamboo Side Pressed Caramel

29



## MOSO® Purebamboo

### Economical flooring made purely of bamboo

MOSO® Purebamboo consists of compact solid bamboo boards. These boards are made of strips pressed together vertically (Side Pressed) or compressed together (High Density®). Purebamboo was the first industrially manufactured bamboo flooring ever developed and introduced by MOSO® on the market; all other bamboo flooring types originate from this product.

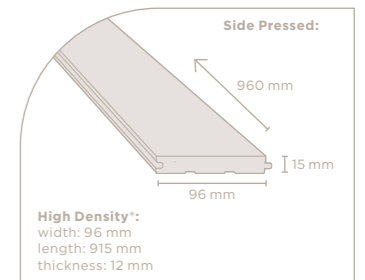
MOSO® Purebamboo is the right choice for anyone who wants original, simple, but good quality bamboo flooring. These flooring matches every interior and contributes to an improved ecological footprint.



**Side Pressed Caramel**  
lacquered (BF-LA660)



**High Density® Caramel**  
lacquered (BF-DS160)





## Plenty of choice in easy to install flooring

MOSO® Topbamboo is an easy to install flooring with a wide choice of colours, patterns and finishes. Topbamboo consists of a bamboo top layer pressed on an HDF core with a soft wood sub layer. Thanks to this construction, the floorboards are very stable.

MOSO® Topbamboo is suitable for anyone who wants affordable bamboo flooring that can be installed quickly. With the variety of colours and textures, including brushed versions, the flooring suits many interiors. The flooring is easy to install thanks to the click system and the convenient size boards.

**Side Pressed Caramel lacquered**  
(BF-SW1151-L01) /  
pre-oiled  
(BF-SW1153-W01)



**Side Pressed Caramel brushed pre-oiled**  
(BF-SW1153B-W01)



**Side Pressed Natural White lacquered**  
(BF-SW1101-L02)



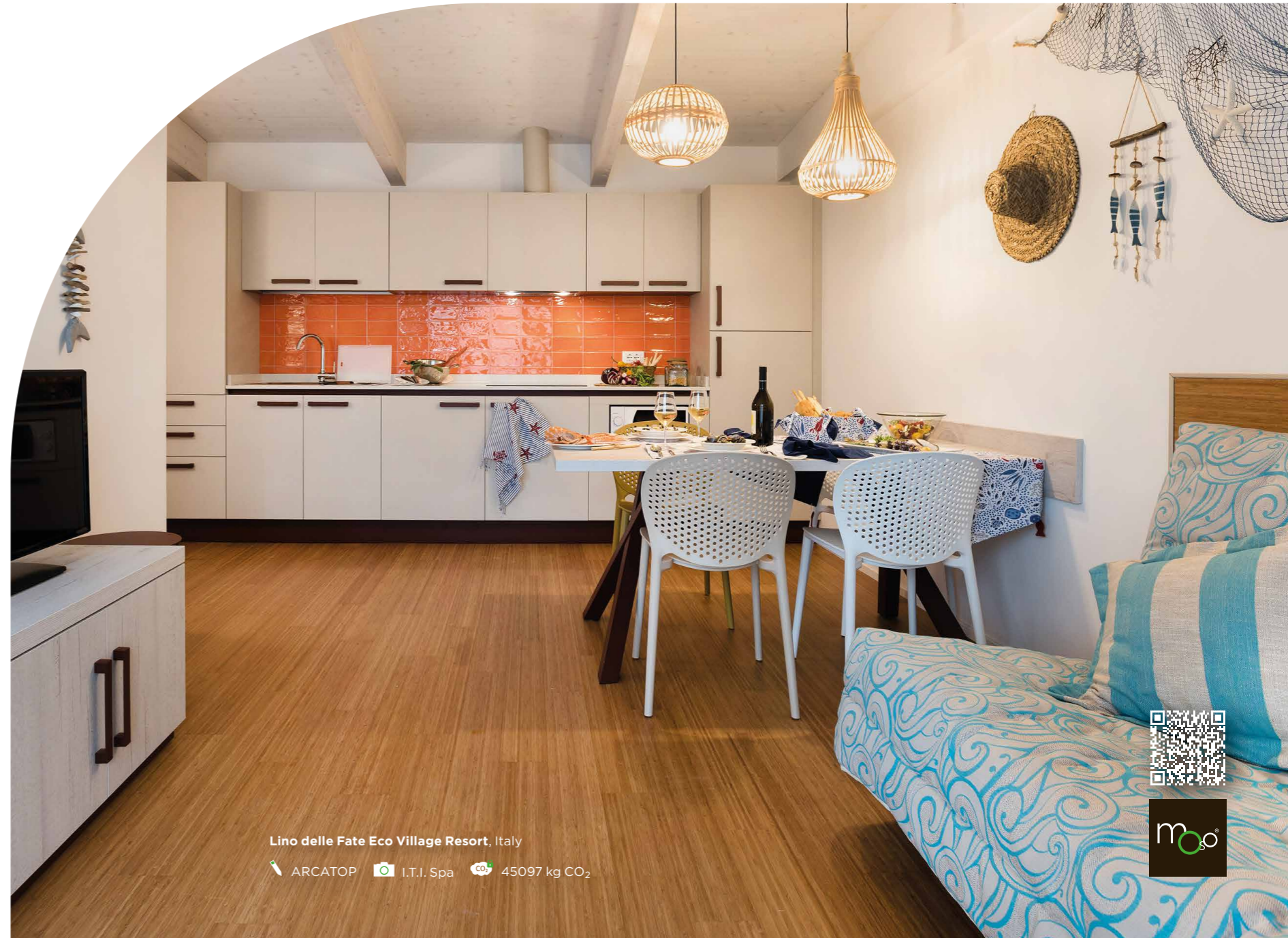
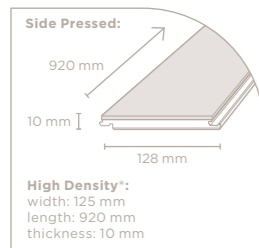
**High Density\* Natural lacquered**  
(BF-SW1210-L01)



**High Density\* Caramel lacquered**  
(BF-SW1260-L01)



**High Density\* Caramel brushed lacquered**  
(BF-SW1260B-L01)





# MOSO® Bamboo Outdoor

With the Bamboo X-treme® and N-durance® Collections, MOSO® has developed a truly **ecological** and **durable** alternatives to increasingly scarce tropical hardwood for outdoor applications. MOSO® uses a unique process to alter the **hardness**, dimensional **stability** and **durability** to a level superior to the best tropical hardwood species. For anyone who appreciates a tough, sustainable, **high-quality** product, with proven **environmental benefits**, MOSO® Bamboo Outdoor is the logical choice.

## Bamboo X-treme®

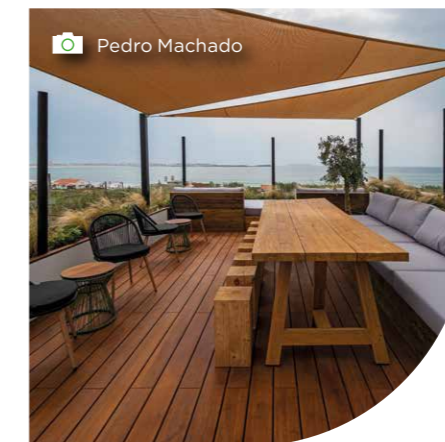
Beautiful outdoor products in a lovely brown colour.



**Imagine Africa Safari Lodge**  
South Africa

## Bamboo N-durance®

Elegant outdoor products in a warm caramel colour.



**Salty Hotel**  
Portugal



Indicator	Important to know	Grand Collection			Eternal Collection				Dynamic Collection	
		Bamboo Elite	Bamboo Elite Herringbone	Bamboo Elite Premium	Bamboo UltraDensity*	Bamboo Supreme	Bamboo Industriale	Bamboo Forest	Purebamboo	Topbamboo
<b>Floor heating / floor cooling*</b>	Thinner = better, because less shrink/swell. Also denser = better (so HD version) because it transmits the heat better. Floor should always be glued fully on subfloor. For cooling: anti condensation device should be installed.	<input checked="" type="radio"/> Long boards can bend a bit and therefore not easy to glue down. Micro bevel can hide seams.	<input checked="" type="radio"/> Micro bevel hides small seams which can occur using floor heating.	<input checked="" type="radio"/> High stability allows floating installation (with click system) on floor heating.	<input checked="" type="radio"/> Long boards are more difficult to glue down. Thickness limits heat transmission.	<input checked="" type="radio"/> 10 mm thickness: the thinnest = the best stability.	<input checked="" type="radio"/> Especially 10 mm version.	<input checked="" type="radio"/> Micro bevel hides small seams which can occur using floor heating.	<input checked="" type="radio"/> Micro bevel (prefinished version) hides small seams which can occur using floor heating.	<input checked="" type="radio"/> Not easy glueing to subfloor because of click system.
<b>Wet rooms, such as a bathroom/Spa</b>	Bamboo is a very stable material but if water gets between the floor boards, into the material, it will lead to problems. Advice: use unfinished versions and lacquer on site to close the surface. Fully glueing to subfloor is necessary.	<input checked="" type="radio"/> Advice: choose unfinished and finish at site.	<input type="radio"/> Not advised because no unfinished version available.	<input type="radio"/> Not advised because no unfinished version available.	<input checked="" type="radio"/> Due to stability very suitable. However bevel can easily absorb water.	<input checked="" type="radio"/> Advice: use unfinished version and finish at site. 10 mm: thinnest = the best.	<input checked="" type="radio"/> Especially 10 mm version.	<input type="radio"/> Not advised because big bevels easily absorb water.	<input type="radio"/> Not advised because no unfinished version available.	<input type="radio"/> Not advised because no unfinished version available.
<b>Floating installation (= not glued to subfloor) vs. fully glued installation</b>	Bamboo has a good stability but will shrink/swell with changing humidity. Always allow a 10 mm expansion gap around the floor. With a bigger expansion gap, the (floating) surface can be bigger.	<input checked="" type="radio"/> Can be installed floating: max width x length room: 6x12 m.	<input checked="" type="radio"/> Can be installed floating: max width x length room: 6x12 m.	<input checked="" type="radio"/> Can be installed floating: max width x length room: 7x12 m.	<input checked="" type="radio"/> It is advisable to fully glue the floor or install on top of joists (UD versions > 20 mm).	<input type="radio"/> Has to be fully glued to subfloor always.	<input type="radio"/> Has to be fully glued to subfloor always.	<input checked="" type="radio"/> Can be installed floating: max width x length room: 6x12 m.	<input checked="" type="radio"/> Can be installed floating: max width x length room: 5x12 m.	<input checked="" type="radio"/> Can be installed floating: max width x length room: 7x12 m.
<b>Big surface (&gt;85 m²) installed without gaps between different areas</b>	Bamboo has a good stability but will shrink/swell with changing humidity. For big floors full glueing to subfloor is advised. Subfloor must be dry/clean/flat!	<input checked="" type="radio"/> Long boards can bend a bit and therefore not easy to glue down.	<input checked="" type="radio"/> Long boards can bend a bit and therefore not easy to glue down.	<input checked="" type="radio"/> Long boards can bend a bit and therefore not easy to glue down.	<input checked="" type="radio"/> Due to high stability very suitable.	<input checked="" type="radio"/> 10 mm gives best stability.	<input checked="" type="radio"/> Made of small/thin bamboo strips, so very stable.	<input checked="" type="radio"/> 3ply configuration is very stable.	<input checked="" type="radio"/>	<input checked="" type="radio"/> Not easy glueing to subfloor because of click system.
<b>Commercial use / High traffic areas</b>	In (heavy) commercial use it is important to have a combination of a very hard toplayer and a very strong finish. Fully glueing to subfloor is advised.	<input checked="" type="radio"/> HD version advised, factory finish not for heavy use.	<input checked="" type="radio"/> HD version advised, factory finish not for heavy use.	<input type="radio"/> Factory finish not for heavy use, not easy glueing (click).	<input checked="" type="radio"/> Very hard so very suitable for heavy traffic. Thanks to high stability also usable in semi-outdoor circumstances.	<input checked="" type="radio"/> High Density* version advised, factory finish = BONA 125 gr/m2 = advised for heavy traffic.	<input checked="" type="radio"/> High Density* version advised. apply a strong project coating.	<input checked="" type="radio"/> Toplayer very hard. No finish required.	<input checked="" type="radio"/> High Density* version advised / factory finish not for heavy use.	<input checked="" type="radio"/> High Density* version advised / factory finish not for heavy use, not easy glueing (click).
<b>Simple and low-cost installation</b>	Depending on the type of installation, the costs for installation partly define the costs of the floor.	<input checked="" type="radio"/> Must be glued in tongue and groove or fully glued to the subfloor.	<input checked="" type="radio"/> Must be glued in tongue and groove or fully glued to the subfloor.	<input checked="" type="radio"/> Relatively low installation costs thanks to the click system.	<input checked="" type="radio"/> It is advisable to fully glue the floor or install on top of joists (UD versions > 20 mm).	<input type="radio"/> Must be fully glued to the subfloor.	<input type="radio"/> Must be fully glued to the subfloor.	<input checked="" type="radio"/> Must be glued in tongue and groove or fully glued to the subfloor.	<input checked="" type="radio"/> Must be glued in tongue and groove or fully glued to the subfloor.	<input checked="" type="radio"/> Easy to install thanks to the click system.
<b>ECO certification (LEED, FSC®, BREEAM EPD available)</b>	Bamboo is an eco-friendly material, but within the MOSO® range there are various 'grades' of eco, depending on the applied materials. All types are available (on request) with FSC® certificate.	<input checked="" type="radio"/> Solely bamboo.	<input checked="" type="radio"/> Solely bamboo.	<input checked="" type="radio"/> Solely bamboo.	<input checked="" type="radio"/> 100% bamboo.	<input checked="" type="radio"/> Solely bamboo.	<input checked="" type="radio"/> 100% bamboo, no glue applied in the product (except for High Density* versions).	<input checked="" type="radio"/> Solely bamboo.	<input checked="" type="radio"/> Solely bamboo.	<input checked="" type="radio"/> Because of HDF core not fully green.
<b>Choice in looks</b>	Bamboo has a very typical look, showing the nodes of the bamboo stem. However by applying different surface treatments, like lacquering, oiling, brushing, staining, many different looks are created.	<input checked="" type="radio"/> Natural, Caramel, Side Pressed, Plain Pressed, High Density*, unfinished, lacquered available.	<input checked="" type="radio"/> Caramel, Side Pressed, High Density*, lacquered and oiled available.	<input checked="" type="radio"/> Natural, Caramel, Side Pressed, High Density*, lacquered and oiled available.	<input checked="" type="radio"/> 1 version available.	<input checked="" type="radio"/> Natural, Caramel, Side Pressed, Plain Pressed, High Density*, unfinished, oiled, lacquered available.	<input checked="" type="radio"/> Natural, Caramel, Side Pressed, High Density*, unfinished available.	<input type="radio"/> 1 version available.	<input checked="" type="radio"/> Natural, Caramel, Side Pressed, Plain Pressed, High Density*, unfinished, lacquered available.	<input checked="" type="radio"/> Natural, Caramel, Side Pressed, High Density*, brushed, stained available.
<b>Similarity to solid wood flooring boards</b>	Bamboo flooring boards can have a similar solid look and feel to wood flooring boards, but with a very typical surface, showing the nodes of the bamboo stem. In the HD versions the bamboo fibers look like wood grains.	<input checked="" type="radio"/> High Density* version available.	<input checked="" type="radio"/> High Density* version available.	<input checked="" type="radio"/> High Density* version available.	<input checked="" type="radio"/> Only available in High Density* version, which is most similar to a wood look.	<input checked="" type="radio"/> High Density* version available.	<input checked="" type="radio"/> High Density* version available.	<input type="radio"/> No High Density* version available, very different look.	<input checked="" type="radio"/> High Density* version available.	<input checked="" type="radio"/> High Density* version available, however not solid (full bamboo).

advised / fully applicable   
  possible / applicable   
  limited possible / limited applicable   
  not possible / not advised / not applicable

# Sustainable

MOSO® Bamboo Products offer clear sustainability advantages and are even proven to be CO<sub>2</sub> neutral during the product lifespan! The inclusion of MOSO® Bamboo Products contributes to a higher LEED, BREEAM, Green Star, HQE and DGNB certification score for green building projects. That's one of the reasons why you can find MOSO® Products in many sustainable reference projects all over the world. FSC® is globally recognized as the best and most stringent responsible forestry certification system in the wood industry. MOSO® can provide all solid bamboo products with an FSC®-certification.



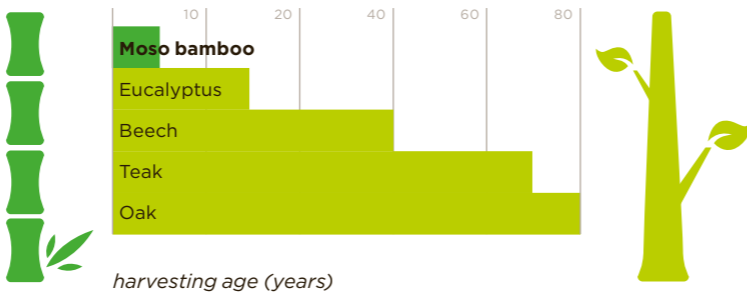
The mark of responsible forestry  
FSC® C002063

All MOSO® Bamboo Flooring is FSC® certified (except Topbamboo because of the non-FSC HDF middle layer)

## Unsurpassed growing speed

### Bamboo: the fastest growing plant in the world

Because of the fast growth, Moso bamboo is managed as an agricultural crop: the annual harvest of the 4-5 year old stems - compared to 60-80 years for tropical hardwood! - provides a steady annual income to farmers and stimulates the bamboo plant to reproduce even faster. Therefore, by default no deforestation occurs with production of MOSO® Bamboo Products, while large amounts of CO<sub>2</sub> are captured in the bamboo forests and products. [www.inbar.int/understanding-bamboos-climate-change-potential](http://www.inbar.int/understanding-bamboos-climate-change-potential)

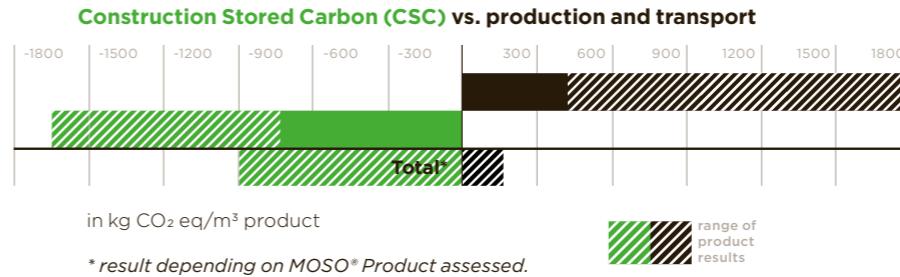


## Carbon footprint

### MOSO® Bamboo Products: CO<sub>2</sub> neutral during the product lifespan\*

MOSO® has conducted several LCA (Life Cycle Assessment) studies, including carbon footprint studies together with Delft University of Technology (TU Delft) and NIBE (LCA experts). The 2015 LCA report, available at [www.moso-bamboo.com/lca](http://www.moso-bamboo.com/lca), was the first of its kind and resulted in many new findings about the carbon footprint of bamboo products. The environmental impact of MOSO® Bamboo Products, excluding the carbon sequestration effect, has also been published in 2016 and updated in 2022 in an official Environmental Product Declaration (EPD) following EN 15804 ([www.moso-bamboo.com/epd](http://www.moso-bamboo.com/epd)).

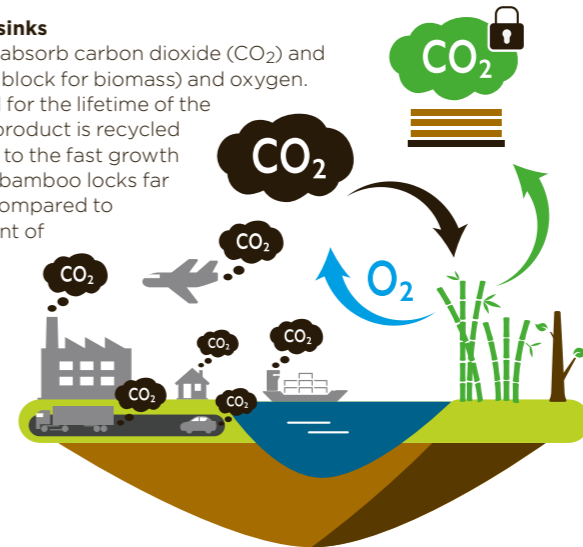
\* This includes the CO<sub>2</sub> (biogenic carbon - EN 16449) stored in the product.



## Carbon storage in bamboo

### Biobased materials act as CO<sub>2</sub> sinks

Through photosynthesis, plants absorb carbon dioxide (CO<sub>2</sub>) and convert it into glucose (building block for biomass) and oxygen. The CO<sub>2</sub> is stored in the material for the lifetime of the product, and even longer if the product is recycled into new, durable products. Due to the fast growth - and related high yields - Moso bamboo locks far more CO<sub>2</sub> in durable products compared to wood species. The locked amount of CO<sub>2</sub> can be calculated rather simply by looking at the density of the material and taking into account the biobased content. For example, MOSO® Bamboo X-treme® lock just over 1.660 kg CO<sub>2</sub> per m<sup>3</sup> of bamboo, which is the equivalent of the CO<sub>2</sub> emissions of 14.000 km driven by a mid-range car.



► [www.moso-bamboo.com/certifications](http://www.moso-bamboo.com/certifications)



# MOSO® Bamboo References

► [www.moso-bamboo.com/references](http://www.moso-bamboo.com/references)

MOSO®  
Bamboo  
Flooring

**Hotel Jakarta**  
The Netherlands



MOSO®  
Bamboo  
Outdoor

**Higher Roch Tower**  
France



MOSO®  
Bamboo  
Panels,  
Veneer &  
Beams

**Lounge by Lexus at  
Brussels Airport** Belgium



MOSO®  
Bamboo  
Unlimited

**Madrid International  
Airport** Spain



**SNCF - Railway Station  
Bordeaux** France



**NBD Bibliën**  
The Netherlands



**Lodge Puku Ridge**  
Zambia



**Ushuaïa Hotel Ibiza**  
Spain



**Commercial Center Mitikah**  
Mexico



**Guggenheim Museum**  
Spain



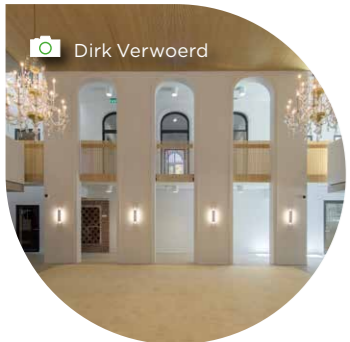
**Stable Doitrand Equestre**  
France



**Schiphol Airport**  
The Netherlands



**Town Hall Bloemendaal**  
The Netherlands



**Hotel ME Barcelona  
by Melia** Spain



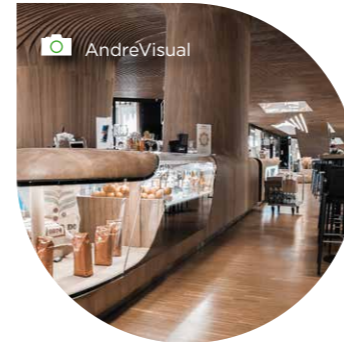
**Grande Arche de  
la Défense** France



**Private Residence**  
Argentina



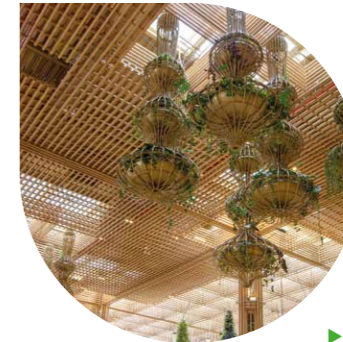
**CityLife Shopping District**  
Italy



**Office FAO United  
Nations Roma** Italy



**Kempegowda International  
Airport** India



Be inspired by hundreds of bamboo applications and countless projects made with a wide range of MOSO® Bamboo Products:



► [www.moso-bamboo.com/references](http://www.moso-bamboo.com/references)

## MOSO® Mastering Bamboo

### Endless possibilities with MOSO® Bamboo Products:

MOSO® develops and creates bamboo products for interior and exterior applications that meet the highest technical requirements and quality standards, enhance the beauty of applications and are made from the sustainable, renewable resource: Moso bamboo.

With more than 25 years' experience in the relatively young bamboo industry, MOSO® is recognised as the global A-brand in bamboo because of its focus on product quality, innovation and sustainability. With an international team and partners in more than 60 countries, MOSO® is continuously looking for new applications and solutions that can be made with the fastest growing plant of the world. The proof is the impressive list of reference projects showcasing endless possibilities with MOSO® Bamboo Products.

Besides MOSO® Bamboo Flooring and Bamboo Outdoor, MOSO® offers a very broad assortment of Bamboo Panels, Beams, Veneer and Flexbamboo. These products are used worldwide in various applications ranging from different types of flooring, stairs, outdoor decking, cladding, fencing, outdoor furniture, shutters and outdoor beams, providing an ideal combination with the MOSO® Bamboo Flooring.

Furthermore, because of its expertise, MOSO® is able to develop unique, customised bamboo solutions for industrial clients, meeting exceptionally stringent requirements. Through its experience, innovative attitude and world-wide network, MOSO® is recognised as the global A-brand in bamboo products. The proof is the impressive list of references and clients such as Madrid Airport, Kempegowda International Airport, BMW, AkzoNobel, Texaco, Guggenheim Museum, SNCF Railway Station Gare du Nord, Iberostar, Rabobank, United Nations (FAO), and CitizenM Hotels. For an overview of our references and clients please visit our website: [www.moso-bamboo.com/references](http://www.moso-bamboo.com/references).



# MOSO® Bamboo UltraDensity®

Heavy duty flooring



SNCF - Bordeaux Saint Jean Trainstation, Bordeaux, France

SNCF AREP 49617 kg CO<sub>2</sub>



Headquarters:

**Moso International B.V.**

Adam Smithweg 2  
1689 ZW Zwaag  
The Netherlands  
T +31 (0)229 265 732  
[info@moso.eu](mailto:info@moso.eu)

Italy:

**Moso Italia S.R.L**

Via Antonio Locatelli 86  
20853 Biassono (MB)  
Italy  
T +39 (0)39 900 5440  
[mosoitalia@moso.eu](mailto:mosoitalia@moso.eu)

North America:

**Moso North America HQ**

Lansdale PA  
United States of America  
T: +1 855 343 8444  
[info@moso-bamboo.com](mailto:info@moso-bamboo.com)

Spain, France, Portugal, North Africa,  
Latin America and Middle East:

**Moso Europe S.L.U.**

C/ Pau Claris, 83 - Principal 2ª  
08010 Barcelona  
Spain  
T +34 (0)93 574 9610  
[contact@moso.eu](mailto:contact@moso.eu)

Sub-Saharan Africa:

**Moso Africa Pty. Ltd.**

7 Glosderry Road Kenilworth  
7708 Cape Town  
South Africa  
T +27 2167 11214  
[contact@moso-bamboo.co.za](mailto:contact@moso-bamboo.co.za)


GCC & Arab Countries:


**Moso MENA**

P.O. Box: 410684  
Dubai - United Arab Emirates  
T: +971 4 8324934  
[mosomena@moso-bamboo.com](mailto:mosomena@moso-bamboo.com)

[www.moso-bamboo.com](http://www.moso-bamboo.com)

 Landmark  
Vastgoed  
Management

 Hans Gorter

 16629 kg CO<sub>2</sub>

moso®

Mastering  
bamboo

EN 2024