

IN-WALL

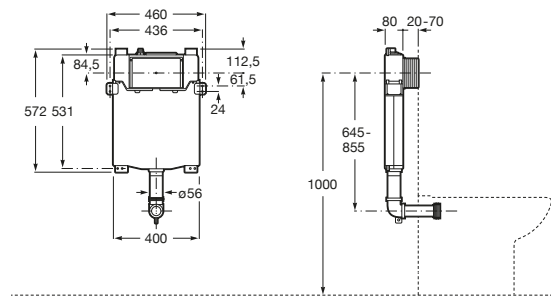
Installation system for floorstanding WC. With compact cistern and dual flush mechanism 6/3, 4.5/3 and 4/2 litres and installation accessories. Minimum depth: 80 mm. (Preset to 6/3L)



PRICE (VAT INCLUDED)

**BGN168.00** BGN.00

TECHNICAL DRAWINGS



FEATURES

Operating plate position: Frontal

Suitable for: Floorstanding toilet



Flushing type

Flushing type: Dual flush 3/6 litres

**COMPATIBLE WITH**

Operating plate AC4

89017500.



AC3 - Dual operating plate

89017400.



Operating plate AC2

89017300.

## In-Wall

Systems that combine efficiency and technology to deliver the best performance.

